

Antec | MERCURY |

ENGINEERED FOR PERFORMANCE

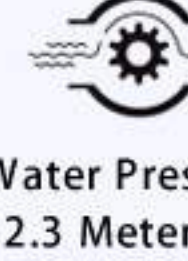
ALL IN ONE LIQUID COOLER



Large Pump



Ultra-Efficient PWM Radiator Fans



Water Pressure Of 2.3 Meters High



Temperature Indicating LED



Graphite Bearings

PTFE Teflon Coated Tubing

MERCURY

Engineered for Performance

2.3 Meters

Powerful Pump Delivers A Water Pressure Of 2.3 Meters High

3500 ml

Flow Rate Of 3.5 L Per Minute

0.28 mm

0.28 mm Thin Liquid Filament



Strong Torque | Sealed, Silent Pump

Powerful pump delivers a water pressure of 2.3 meters high.

The pump consists of a three phase motor that promotes rapid liquid circulation- helping your CPU stay cool while being pushed to the limit.

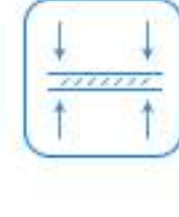


High flow rate of 3.5 Liters per minute maximizes cooling efficiency



Antec

MERCURY



0.28 mm Thin Liquid Filament

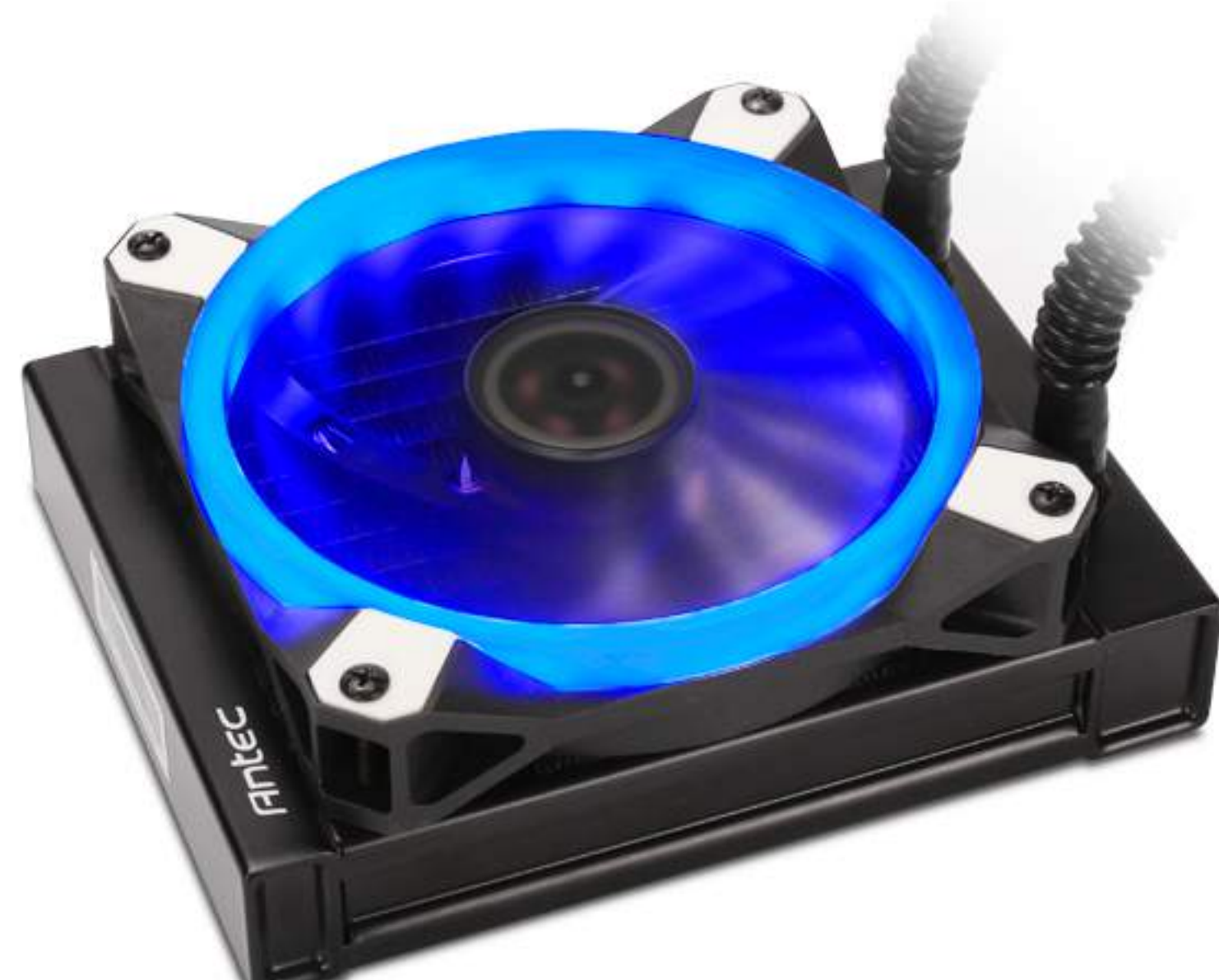
16 Fins Per Inch

1.3mm Core Channels Measure 1.3mm Thin

Ultra-Efficient

Ultra-Efficient Row Arrangement Passes Heat From One Side Of The Radiator To The Other

Mercury's high-density, 16 FPI (fins per inch) arrangement achieves cooling performance fit for any enthusiast's PC. The super fine heat fins are spaced at 2.8 mm for cool air to pass through optimally.



MERCURY

Works perfectly with the new Cube Certified by EKWB™



50000 Hours Lifespan

Up To 5 Years Of Operation

*Based on average, daily usage of a typical PC user



Non-Lubricated Graphite Bearings



Carbon Metal Construction Durable Ceramic Axis

The Mercury series is engineered to keep your CPU cool for up to 50,000 hours. Comprised of high-quality components, the Mercury series is proven to last up to 5 years — a benchmark of quality that surpasses the standard.



TEMPERATURE REACTIVE LED

MERCURY

TEMPERATURE INDICATING LED LIGHTS CHANGE ACCORDING TO CPU TEMPERATURE



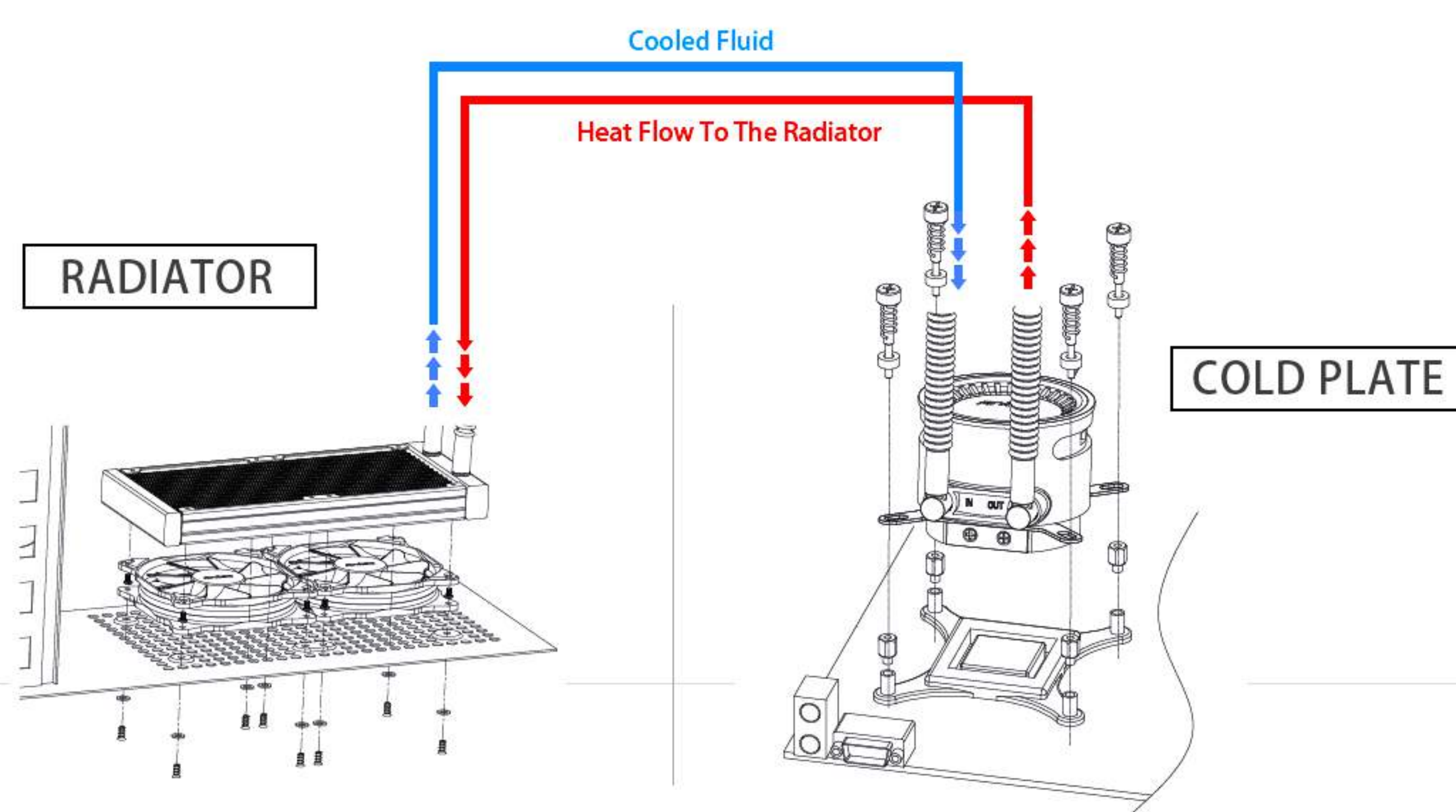
• < 35°C BLUE



• 36-40°C GREEN



• ≥ 41°C RED



THE NEW MERCURY AIO LIQUID COOLING SERIES:

M120



M240



M360



50,000 hours

50,000 hours of operation Non-lubricated graphite bearings

1X50

Ceramic axis - Graphite bearings increase the operational lifespan of the Mercury series - up to 50 times longer than the industry average

PTFE

Tubing coated with Teflon for increased durability

SATA

Powered by SATA connection Easy installation and cable management

Item	Mercury 120	Mercury 240	Mercury 360
Fan Dimensions	120 x 120 x 25 mm	120 x 120 x 25 mm	120 x 120 x 25 mm
Fan Speed	900~1800 RPM ± 10%	900~1800 RPM ± 10%	900~1800 RPM ± 10%
Fan Airflow	73.31CFM (2.021 m3/min)	73.31CFM (2.021 m3/min)	73.31CFM (2.021 m3/min)
Noise	< 30 dBA	< 30 dBA	< 30 dBA
Fan Static Pressure	2.25 mm-H2O	2.25 mm-H2O	2.25 mm-H2O
Fan Connector	4-Pin	4-Pin	4-Pin
Fan Power Consumption	3.6W	3.6W	3.6W
Radiator Dimensions	154 x 119 x 27 mm	274 x 119 x 27 mm	394 x 119 x 27 mm
Radiator Material	Aluminum	Aluminum	Aluminum
Pump Lifespan	50,000 hours	50,000 hours	50,000 hours
Pump Connector	3-Pin or SATA power	3-Pin or SATA power	3-Pin or SATA power
Pump Power Consumption	5.4W	5.4W	5.4W
Flow Rate	3.5 L/Min	3.5 L/Min	3.5 L/Min
Socket Compatibility	Intel LGA775,LGA1150, LGA1151,LGA1155 LGA1156 LGA1366 LGA2011 LGA2066 AMD AM2 AM3 , AM2+, AM3+, AM4, FM2	Intel LGA775,LGA1150, LGA1151,LGA1155 LGA1156 LGA1366 LGA2011 LGA2066 AMD AM2 AM3 , AM2+, AM3+, AM4, FM2	Intel LGA775,LGA1150, LGA1151,LGA1155 LGA1156 LGA1366 LGA2011 LGA2066 AMD AM2 AM3 , AM2+, AM3+, AM4, FM2
Warranty	5 Years	5 Years	5 Years

