

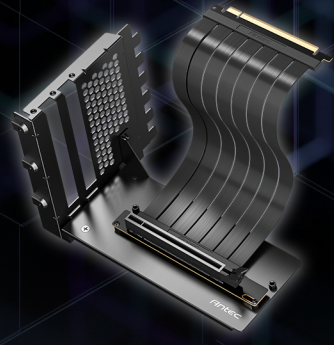
Antec

RTX50 PCI-E 5.0 RISER CABLE VERTICAL BRACKET KIT

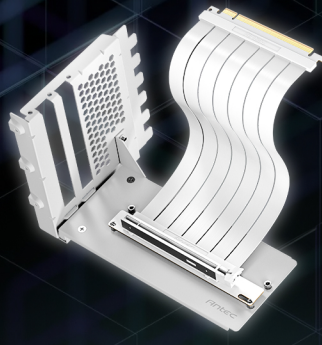
Support up to RTX 5090. Showcase your appealing graphics cards by using Antec PCI-E 5.0 riser cable.

PCI-E 5.0

Riser Cable



Vertical Bracket PCI-E 5.0 Black



Vertical Bracket PCI-E 5.0 White

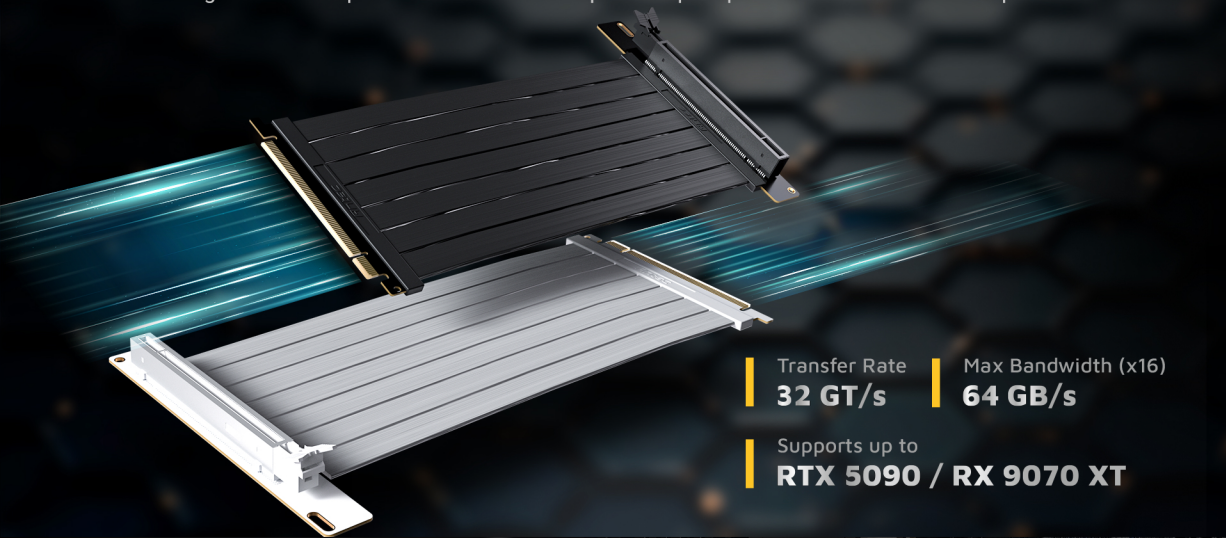
90° GRAPHICS CARD MOUNT

Compatible Antec Cases: Flux Series/ C8 Series/
C7 Series/ Performance 1 FT/ P20C Series



PCI-E 5.0 RISER CABLE

Perfectly compatible with the latest GPU **up to RTX 5090**. 200mm long, which is the most ideal length of cable to pair with the bracket that prevents poor performance or insufficient space.

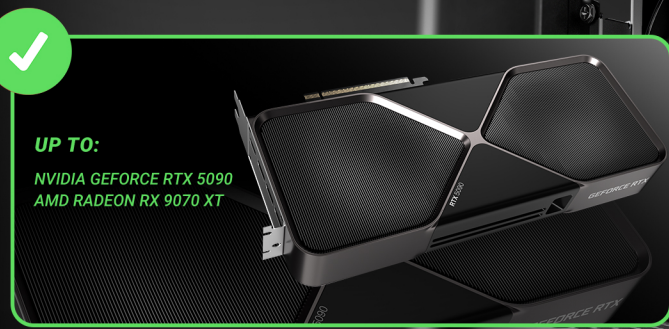


Transfer Rate
32 GT/s

Max Bandwidth (x16)
64 GB/s

Supports up to
RTX 5090 / RX 9070 XT

RISER CABLE COMPATIBLE WITH HIGH-END GRAPHICS CARDS



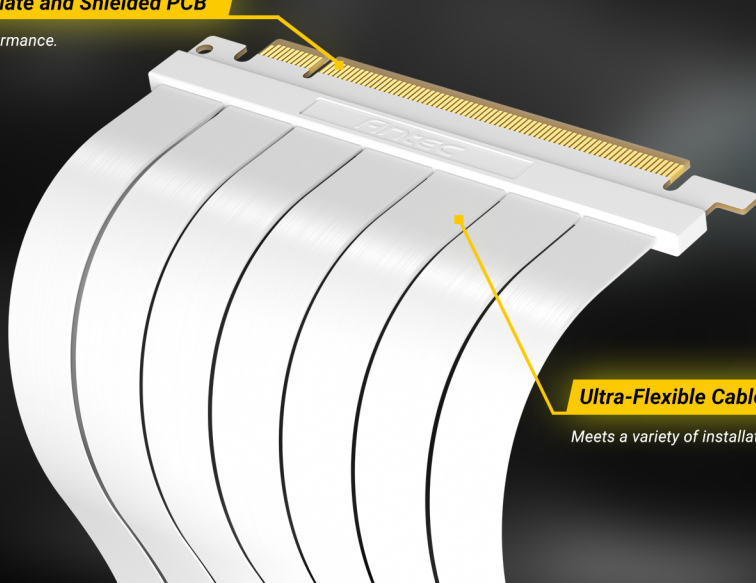
UP TO:

NVIDIA GEFORCE RTX 5090
AMD RADEON RX 9070 XT



High Quality Golden Plate and Shielded PCB

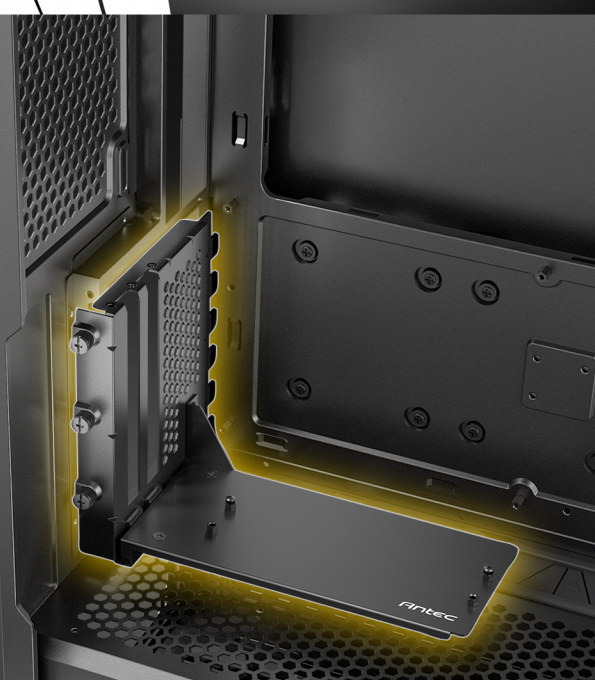
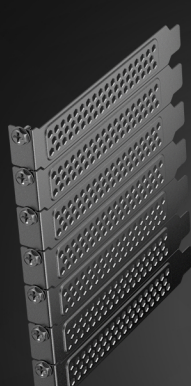
For extreme and stable performance.



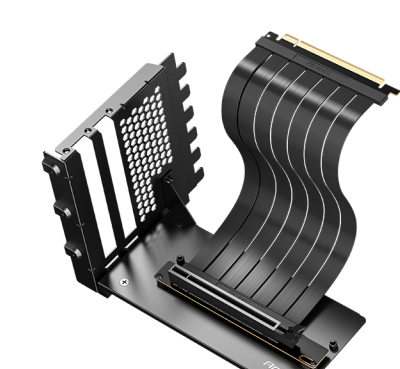
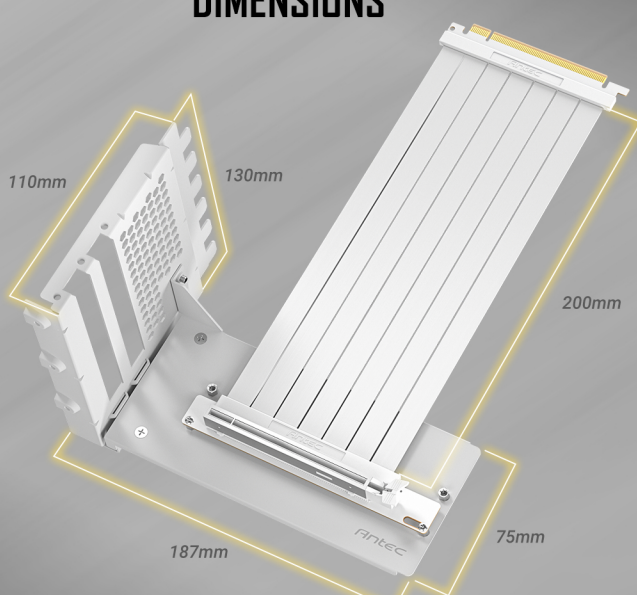
Ultra-Flexible Cable Sleeves

Meets a variety of installation scenarios.

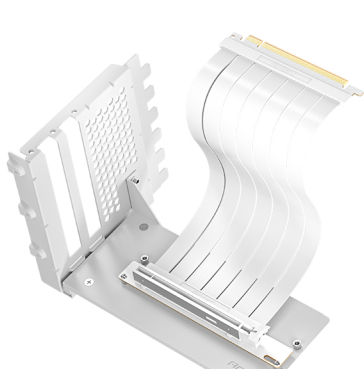
ONLY SUPPORT FULLY-OPEN PCIE EXPANSION SLOT CHASSIS



DIMENSIONS



Color	Black
Model Name	AT-RCVB-BK200-PCIE5
Warranty	1 year
UPC#	0-761345-70003-0



Color	White
Model Name	AT-RCVB-W200-PCIE5
Warranty	1 year
UPC#	0-761345-70004-7

Antec